

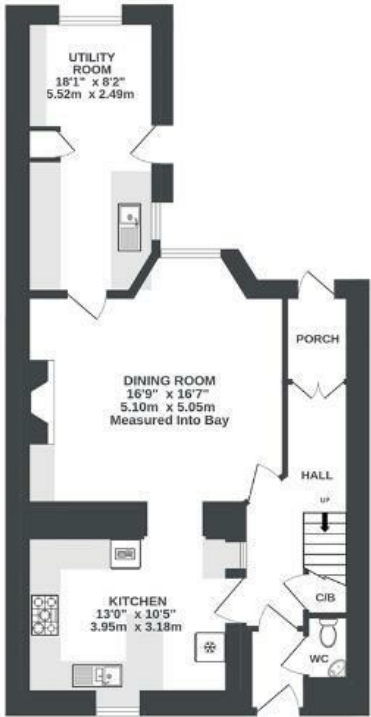
Somerset Street

KINGSDOWN

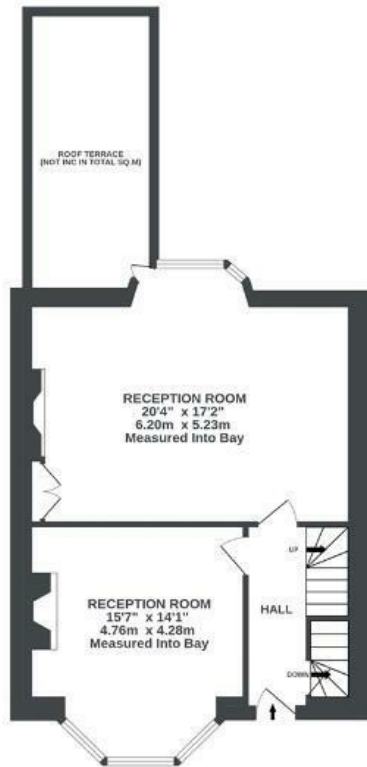
APPROXIMATE FLOOR AREA
275.4 SQM / 2964 SQFT



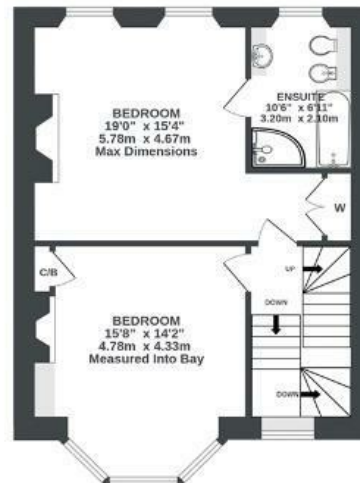
LOWER GROUND FLOOR
689 sq.ft. (64.0 sq.m.) approx.



GROUND FLOOR
590 sq.ft. (54.8 sq.m.) approx.



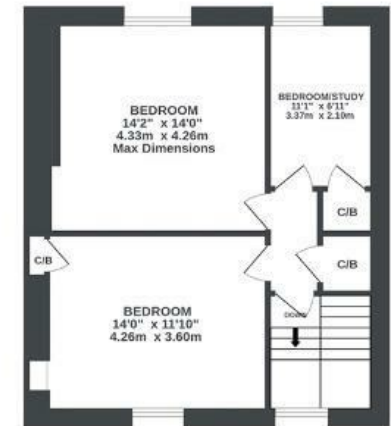
1ST FLOOR
560 sq.ft. (53.9 sq.m.) approx.



2ND FLOOR
560 sq.ft. (52.0 sq.m.) approx.



3RD FLOOR
545 sq.ft. (50.7 sq.m.) approx.



Illustrations are for reference purposes only, measurements are approximate, not to scale.

Boardwalk

Somerset Street

KINGSDOWN, BRISTOL



£850,000



7 Bedrooms



BS2 8NB



2 Bathrooms

"It's been a great family home, we moved with two small children and had our third here. We have fond memories of the children rampaging around the house. We've cherished bringing them up in the city. The thing that first struck was the light and vast expanse of the view across the city and beyond. The garden is a little oasis where we sit and listen to the birds in the summer, it's tranquility is wonderful."

